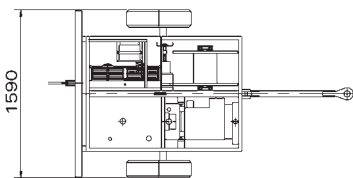
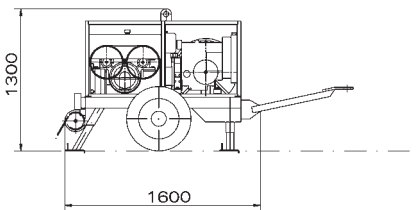


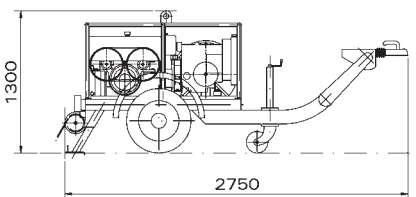
The machine is suitable to string one rope.
The bull-wheel grooves are made of thermally treated steel.
The puller has been specifically designed for laying of underground cables



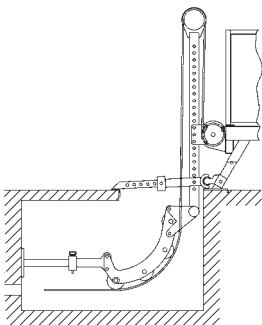
Certified Quality System
ISO 9001:2000



M = 850 kg
(without rope)



OPT 112



OPT 110

PERFORMANCE

Max pull	25 kN
Speed at max pull	0.5 km/h
Max speed	4 km/h
Pull at max speed	3 kN

Note: the basic machine performance is calculated at 20°C and at sea level

CHARACTERISTICS

Bull-wheel diameter	250 mm
Max rope diameter	10 mm

ENGINE

Diesel	10 kW
Cooling system	water
Electrical system	12 V

HYDRAULIC TRANSMISSION

Closed hydraulic circuit for stepless speed variation in both rotating directions

CONFIGURATION

Negative self-acting hydraulic brake

Hydraulic dynamometer with set-point and automatic control of maximum pull

Hydraulic oil cooling system

Digital meter counter

Control instruments for hydraulic system and Diesel engine

Rigid axle for towing at max speed of 30 km/h

Built-in reel winder with automatic level wind and special reel for 500 m of Ø 10 mm rope

Noise reduction protection

Presetting for electronic firing parameter recorder

OPTIONAL

110 Rod with roller device for underground cables

112 Type approved trailer for towing at max speed of 80 km/h with mechanical parking brake.
Towing bar with inertial braking system and towing hook, caravan type and eye hook Ø 40 mm.
Lighting system trailer

DLR 100 Electronic firing parameter recorder



DLR 100