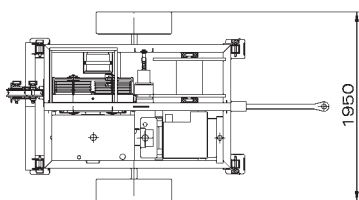
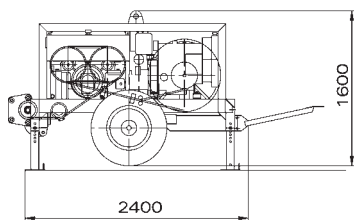


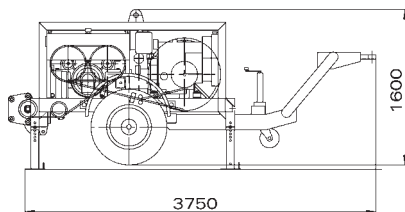
The machine is suitable to string one rope.
The bull-wheel grooves are made of thermally treated steel.
The puller has been specifically designed for laying of underground cables



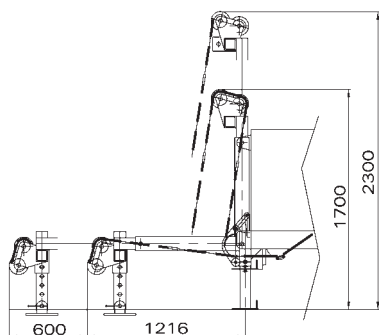
Certified Quality System
ISO 9001:2000



M = 1850 kg
(without rope)



OPT 112



OPT 110

M = 120 kg

PERFORMANCE

Max pull	50 kN
Speed at max pull	1 km/h
Max speed	5 km/h
Pull at max speed	10 kN

Note: the basic machine performance is calculated at 20°C and at sea level

CHARACTERISTICS

Bull-wheel diameter	350 mm
Max rope diameter	14 mm

ENGINE

Diesel	34 kW
Cooling system	water
Electrical system	12 V

HYDRAULIC TRANSMISSION

Closed hydraulic circuit for stepless speed variation in both rotating directions

CONFIGURATION

Negative self-acting hydraulic brake

Hydraulic dynamometer with set-point and automatic control of maximum pull

Hydraulic oil cooling system

Digital meter counter

Control instruments for hydraulic system and Diesel engine

Rigid axle for towing at max speed of 30 km/h with mechanical parking brake

Built-in reel winder with automatic level wind and special reel for 700 m of Ø 14 mm rope

Noise reduction protection

Presetting for electronic firing parameter recorder

EQUIPMENT ON DEMAND

059 Equipment for radio control

OPTIONAL

110 Rod with roller device for underground cables

112 Type approved trailer for towing at max speed of 80 km/h with mechanical parking brake.
Towing bar with inertial braking system and towing hook, caravan type and eye hook Ø 40 mm.
Lighting system trailer

DLR 100 Electronic firing parameter recorder



DLR 100